



Butterfly Dance

PDF Pattern

Completed size: 55cm x 50cm (21 1/2" x 19 1/2")

Fabric requirements:

- 15cm (6") pink floral - first border.
- 5cm (2") each of six assorted fabrics - second border.
- 10cm (4") grey floral - third border.
- 25cm (10") grey stripe - binding.
- 30cm x 35cm (12" x 14") white linen for embroidery.
- 30cm x 35cm (12" x 14") Vilene H410 (iron on interfacing).
- 55cm x 50cm (21 1/2" x 19 1/2") Vilene H630 (iron on pellon).

COMSO embroidery threads:

- 155 grey
- 374 blue
- 382 flesh
- 503 pink
- 702 yellow
- 800 red



Cinderberry

Natalie Lymer

Product N108pdf

www.cinderberrystitches.com

PO Box 1118 | Geelong 3220 | Australia
Studio : natalie@cinderberrystitches.com
Instagram : @cinderberries
Facebook : Cinderberry Stitches
Phone : 0403 023 314



Cinderberry

Natalie Lymer



Butterfly Dance

PDF

The Butterfly Dance

Welcome to The Butterfly Dance a stitched and pieced mini quilt project.

This pattern contains The Butterfly Dance embroidery design and detailed instructions to make the mini quilt project you see on the pattern cover. Simply choose to trace the design onto fabric using a pen and light box.

You will be stitching in no time!

Be sure to read over all the instructions before cutting and starting your project.

All seams are sewn with a 1/4" seam allowance.

Just in case you are wondering, WOF simply means 'width of fabric' cut from selvage to selvage.

The Butterfly Dance

Cutting requirements

From linen cut one 12" x 14" rectangle.

From pink fabric (first border) cut two 2 1/2" x 9 1/2" strips **and** two 2 1/2" x 15 1/2" strips.

From six assorted fabrics (second border) cut one 1 1/2" x WOF strip from **each** fabric.

From grey fabric (third border) cut four 1 1/2" x 19 1/2" strips.

From grey stripe fabric (binding) cut three 2 1/2" x WOF strips.

From fusible interfacing (Vilene H410) cut one 12" x 14" rectangle.

From light weight iron on pellon (Vilene H630) or Parlan cut one 21 1/2" x 19 1/2" rectangle.

From backing fabric cut one 24" x 22" rectangle.

The Butterfly Dance

Making your mini quilt

Let's begin by stitching and trimming your embroidery block

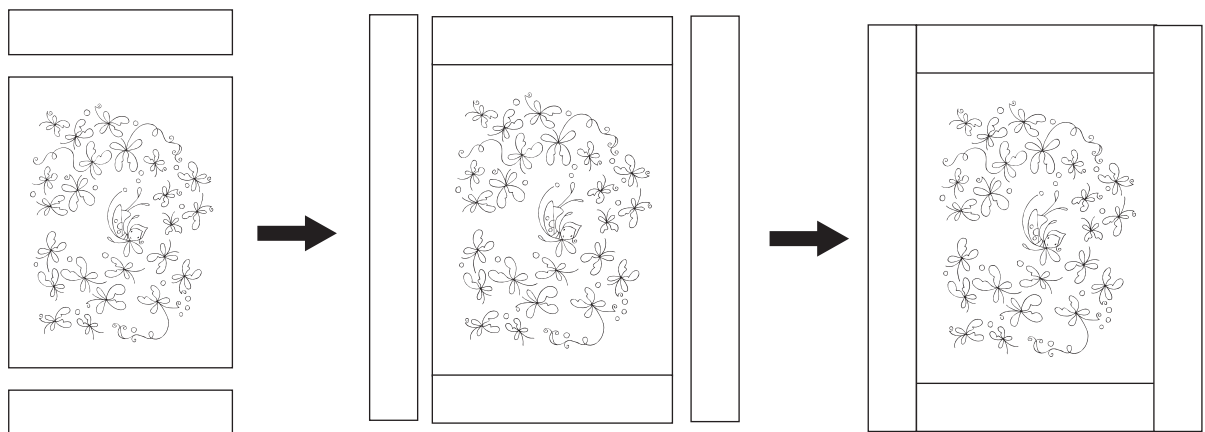
- Trace the stitching design to the right side of the 12" x 14" linen rectangle and fuse light weight interfacing (Vilene H410) to the back.
- Complete all stitching using the stitch & thread guide, two strands have been used throughout the pattern unless noted.

Tip: Using a stitching hoop or frame while hand stitching will help to tension your fabric correctly and reduce strain on your hands and fingers.

- When you have finished stitching, press with your iron and trim the block to measure 9 1/2" x 11 1/2".

Adding the first border

- Take the 9 1/2" x 11 1/2" embroidered block and two 2 1/2" x 9 1/2" pink strips. Matching raw edges pin each strip along the top and bottom edge of the embroidered block. Press your seams toward the strip.
- Take the remaining two 2 1/2" x 15 1/2" strips, matching raw edges again pin each strip along each side & press your seam toward the strip.



Adding the second pieced border

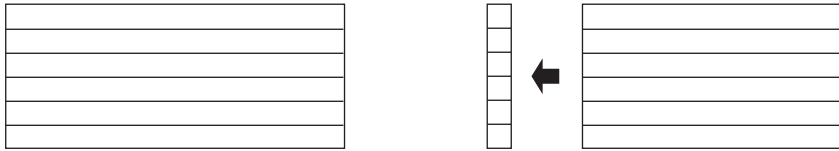
The second border is made from the six assorted 1 1/2" fabric strips - for an even more scrappy border look just use additional assorted strips!

- Lay each 1 1/2" strip out side by side on your work surface mixing up colour and fabric tone, sew each strip together along the length and press all seams to one side.
- Cross cut your pieced panel into 1 1/2" strips as shown on the following page.

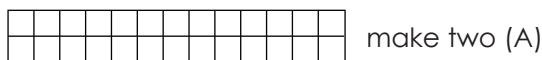
The Butterfly Dance

Adding the second pieced border (continued)

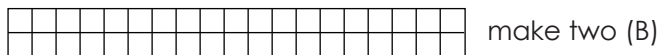
Sew 1 1/2" strips together and subcut (refer to steps on previous page)



- Continue to piece and sew the block strips together making:
Two strips of twenty six 1 1/2" squares as below.



and two strips of thirty eight 1 1/2" squares as below.



- With right sides together take one strip A and the main panel, pin the strip along the top edge matching raw edges and sew. Pin and sew the remaining strip A along the bottom seam, press seams toward the first border.
- With right sides together take one strip B and the main panel, pin the strip along the left side edge matching raw edges and sew. Pin and sew the remaining strip B along the right side seam, press seams toward the first border.

Adding the third border

- Take the main panel and two 1 1/2" x 19 1/2" grey strips. Pin and sew each strip along the left and right edges of the main panel and press your seams toward the third border.
- Sew the remaining two 1 1/2" x 19 1/2" grey strips along the top and bottom edges of the main panel and press your seams toward the third border.

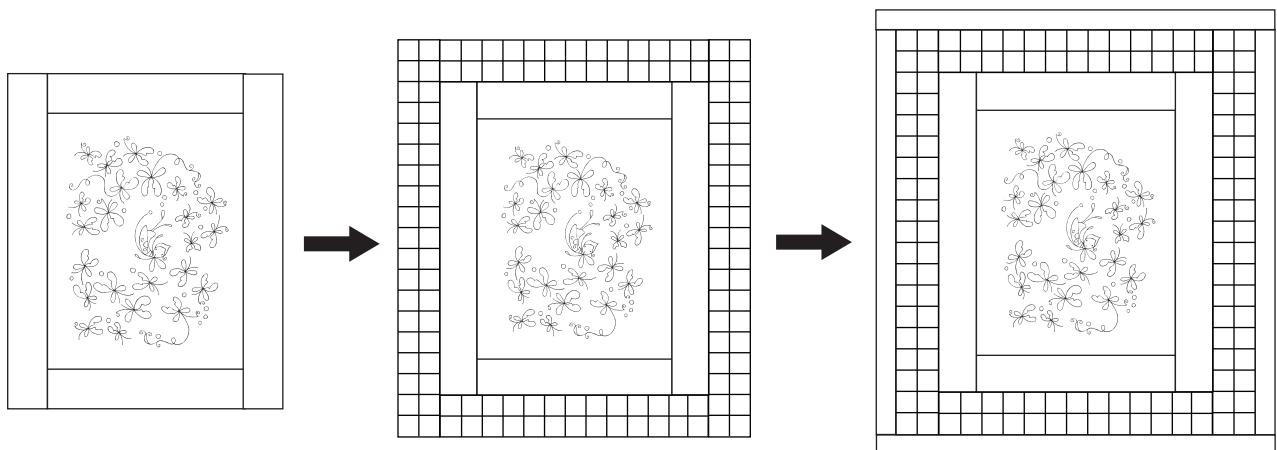


Diagram above shows placement of all three borders

The Butterfly Dance

Layer, baste and hand quilt

- Press your mini quilt well and fuse light weight iron on pella (Vilene H630) to the wrong side. Place this over the backing fabric and baste together to hold using your needle and thread or safety pins.
- I have chosen to use #8 pearl thread from DMC in white, stitching around each border strip and a little cross in each grey 1 inch square of border two. The pearl thread and larger quilt stitches blends well with the embroidery and finishes off the overall design.

Binding to finish

- Take three grey stripe 2 1/2" strips x WOF and join them together using a mitered seam to form one long strip. Fold the strip in half length way with wrong sides together and press. With raw edges together pin the binding strip to the edge of the quilt top and sew in place. Turn the binding over and hand stitch in place to complete.

Stitch and thread guide

The COSMO threads used to make The Butterfly Dance sample are listed below, a conversion to DMC is also listed if required.

382 - flesh (842 DMC)
155 - grey (413 DMC)

800 - bright red (321 DMC)
503 - pink (603 DMC)

374 - blue (518 DMC)
702 - yellow (728 DMC)

Description	COSMO thread	Stitch type
Elfin face	382	back stitch
Elfin eyes	155	satin stitch
Elfin lips	"	back stitch - one strand
Hat	800	back stitch
Arms and legs	"	"
Stripes on dress	"	"
Half skirt (with spots)	"	"
Antenna on red butterfly	"	"
Spots on half skirt	"	satin stitch
All red butterfly wings	"	chain stitch
Dress	503	back stitch
Stripes on dress	"	"
Antenna on pink butterfly	"	"
Line behind fairies back	"	"
All pink butterfly wings	"	chain stitch
All blue butterfly wings	374	chain stitch
Antenna on blue butterfly	"	back stitch
Fairy wings	702	back stitch
Solid scattered spots	"	satin stitch
Dashed line behind fairies	"	running stitch

The Butterfly Dance - design sheet

